

**Professional Certification**

I hereby certify that these documents were prepared or approved by me, and that I am a duly licensed professional engineer under the laws of the State of Maryland.

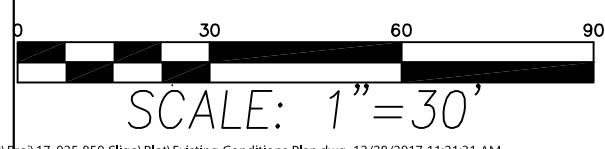
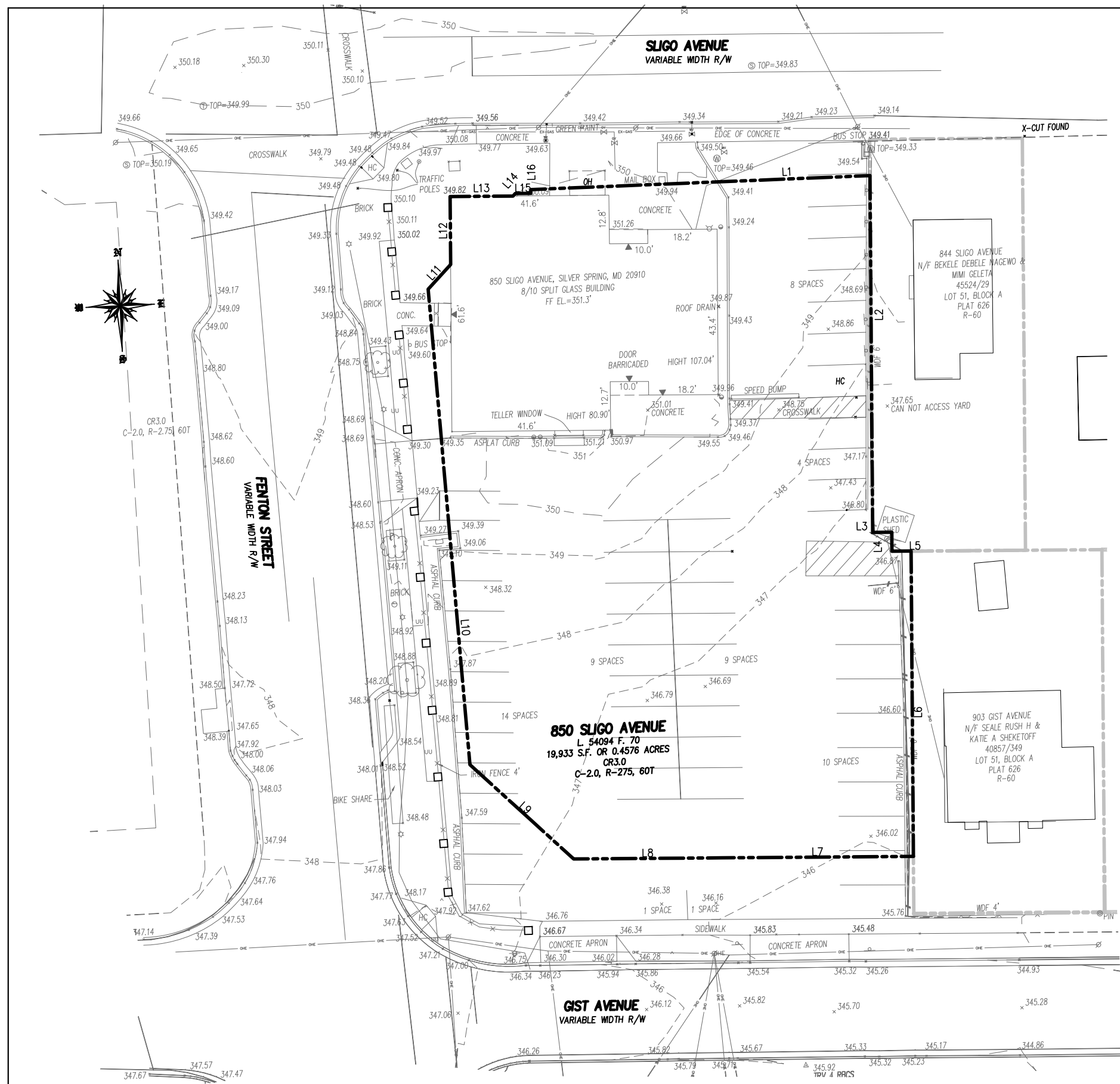
Licence No.: 16148  
 Expiration Date.: 08-22-18

| Point | Northing   | Easting     | Elevation | Description            |
|-------|------------|-------------|-----------|------------------------|
| 1     | 481742.291 | 1305500.329 | 347.98    | TRV PK FOUND "MER-136" |
| 2     | 482068.420 | 1305494.421 | 349.50    | TRV PK FOUND "MER-135" |
| 3     | 482030.654 | 1305665.202 | 349.69    | TRV PK FOUND SET       |
| 4     | 481746.945 | 1305656.326 | 345.92    | TRV RBCS               |

**LEGEND**

- GROUND SHOT
- SIGN
- STAND PIPE
- FIRE HYDRANT
- WATER METER
- WATER VALVE
- WATER MH
- PARKING METER
- TELE. MH
- SANITARY MH
- GAS VALVE
- OVERHEAD ELEC.
- GUY WIRE
- LIGHT POLE
- POWER POLE
- DOOR
- BOLLARD
- P.K. NAIL
- IRON PIPE FOUND
- TRAVERSE
- CURB
- CURB & GUTTER
- UNDG. PHONE
- UNDG. GAS
- UNDG. ELEC.
- OVERHANG
- WOOD FENCE
- FENCE
- PROPERTY LINE

| LINE TABLE |               |          |
|------------|---------------|----------|
| LINE       | BEARING       | DISTANCE |
| L1         | S 89°39'20" E | 88.91'   |
| L2         | S 02°16'20" W | 93.49'   |
| L3         | S 87°43'40" E | 5.00'    |
| L4         | S 02°16'20" W | 4.96'    |
| L5         | S 87°43'40" E | 5.02'    |
| L6         | S 02°16'20" W | 80.02'   |
| L7         | N 87°43'40" W | 50.15'   |
| L8         | N 87°43'30" W | 38.85'   |
| L9         | N 45°00'40" W | 36.73'   |
| L10        | N 02°18'30" W | 125.06'  |
| L11        | N 44°59'17" E | 8.75'    |
| L12        | N 02°16'20" E | 17.82'   |
| L13        | S 87°43'40" E | 16.46'   |
| L14        | N 44°59'17" E | 0.91'    |
| L15        | S 87°43'40" E | 4.08'    |
| L16        | N 02°16'20" E | 0.99'    |



**J·B·A**  
 Johnson • Bernat • Associates, Inc.  
 Engineering • Surveying • Planning

205 N. Frederick Ave. S. 100  
 Gaithersburg, MD 20877  
 Tel. (301) 963-1133  
 Fax: (301) 963-6306  
 www.jba-inc.net

PLAN NO.:  
 SCALE: 1"=30'  
 DATE: 12/8/17  
 SHEET: SK-2  
 FILE NO.:

**850 SLIGO AVENUE**  
**EXISTING CONDITION PLAN**

THIRTEENTH ELECTION DISTRICT, MONTGOMERY COUNTY, MD