

WESTWOOD SHOPPING CENTER

7TH ELECTION DISTRICT
BETHESDA, MARYLAND

Applicant / Owner:
Equity One (Northeast Portfolio) LLC
c/o Regency Centers, L.P.

1919 Gallows Road, Suite 1000
Vienna, VA 22182
703-442-4302
Sam Steibel

Residential Developer:
The Neighborhoods of EYA
4800 Hampden Lane, Suite 300
Bethesda, MD 20814
301-634-8600
Jack Lester

Attorney:
Linows and Blocher LLP
7200 Wisconsin Avenue, Suite 800
Bethesda, MD 20814
301-654-0504
Erin Girard

Civil Engineer:
Johnson Bernat Associates, Inc.
205 N. Frederick Avenue, Suite 100
Gaithersburg, MD 20877
301-963-1133
Kevin Johnson

Architect:
Mushinsky Voelzke Associates | MV+A
1200 G Street, NW Suite 250
Washington, DC 20005
202-682-2822
Jim Voelzke

Landscape Architect:
LandDesign
200 South Peyton Street
Alexandria, VA 22314
703.594.7784
Gabriela Canamar

Traffic Consultant:
Wells + Associates
8730 Georgia Avenue, Suite 200
Silver Spring, MD 20910
301-971-3415
Nancy Randall

SITE PLAN NO. 820180190

PROPOSED LOT PLAN PHASE 1

DECEMBER 10, 2018

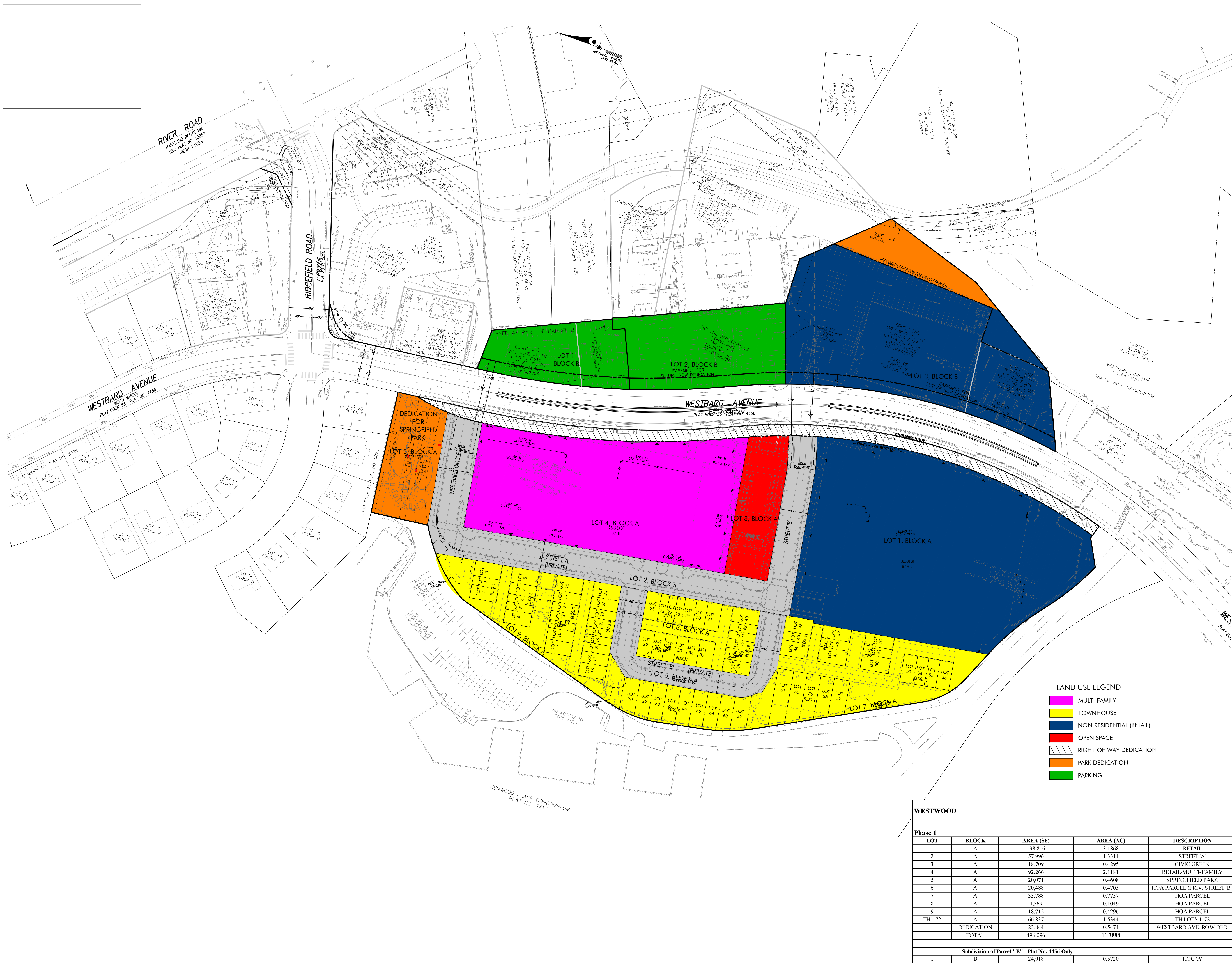
DRAWN BY: AMB CHECKED BY: KJJ

REV.	ISSUE	DATE

DRAWING STAMP

SHEET NUMBER

SP-401



LAND USE LEGEND

- MULTI-FAMILY
- TOWNHOUSE
- NON-RESIDENTIAL (RETAIL)
- OPEN SPACE
- RIGHT-OF-WAY DEDICATION
- PARK DEDICATION
- PARKING

WESTWOOD				
Phase 1				
LOT	BLOCK	AREA (SF)	AREA (AC)	DESCRIPTION
1	A	138,816	3.1868	RETAIL
2	A	57,996	1.3314	STREET 'A'
3	A	18,709	0.4295	CIVIC GREEN
4	A	92,266	2.1181	RETAIL/MULTI-FAMILY
5	A	20,071	0.4608	SPRINGFIELD PARK
6	A	20,488	0.4703	HOA PARCEL (PRIV. STREET 'B')
7	A	33,788	0.7757	HOA PARCEL
8	A	4,569	0.1049	HOA PARCEL
9	A	18,712	0.4296	HOA PARCEL
TH1-72	A	66,837	1.5344	TH1LOTS 1-72
DEDICATION		23,844	0.5474	WESTWARD AVE. ROW DED.
TOTAL		496,096	11.3888	
Subdivision of Parcel "B" - Plat No. 4456 Only				
1	B	24,918	0.5720	HOC 'A'
2	B	37,517	0.8613	HOC 'B'
3	B	95,115	2.1835	BOWLMOR
DEDICATION		13,539	0.3108	WILLETT BRANCH DEDICATION
TOTAL		171,089	3.6169	

