

E-FILE STAMP

BENCH MARK TABLE		
NO.	ELEV.	DESCRIPTION
5366	293.14	STANDARD WSSC BRASS DISK SET IN BASE OF CONCRETE TRAFFIC BOX
500	245.36	SQUARE CUT ON CONC CURB LOCATED ON THE NORTH SIDE OF COLUMBIA AVENUE

TRAVERSE TABLE			
STA	NORTHING	EASTING	DESCRIPTION
200	477609.20000	1310717.61400	290.96 REBAR AND CAP
209	477324.65000	1310582.97200	260.60 MAGNAIL
211	477164.64100	1310489.10000	241.25 REBAR AND CAP
201	477594.64500	1310386.21500	294.34 RR SPIKE
202	477433.75999	1310586.24116	297.33 MAGNAIL
50	477345.27109	1310477.36272	271.66 FLY 50
51	477356.26592	1310456.94205	280.18 FLY 51

LEGEND:

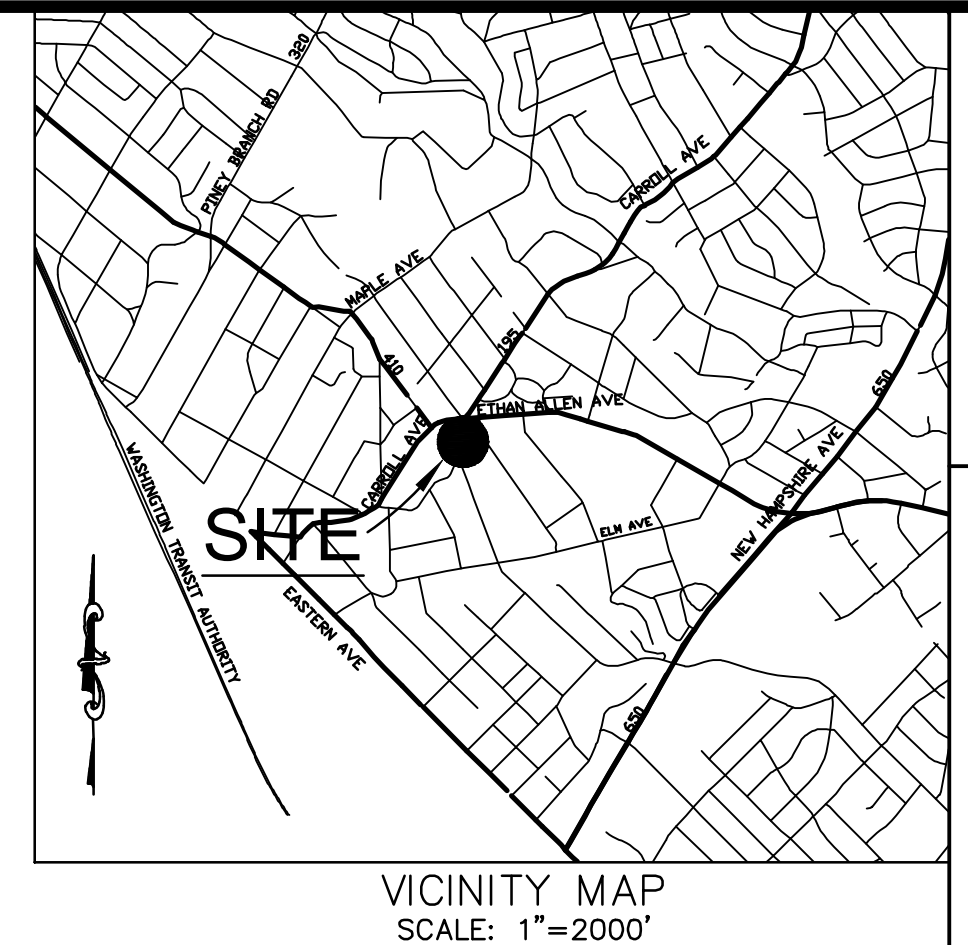
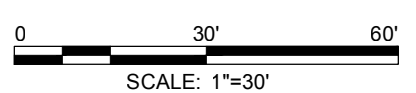
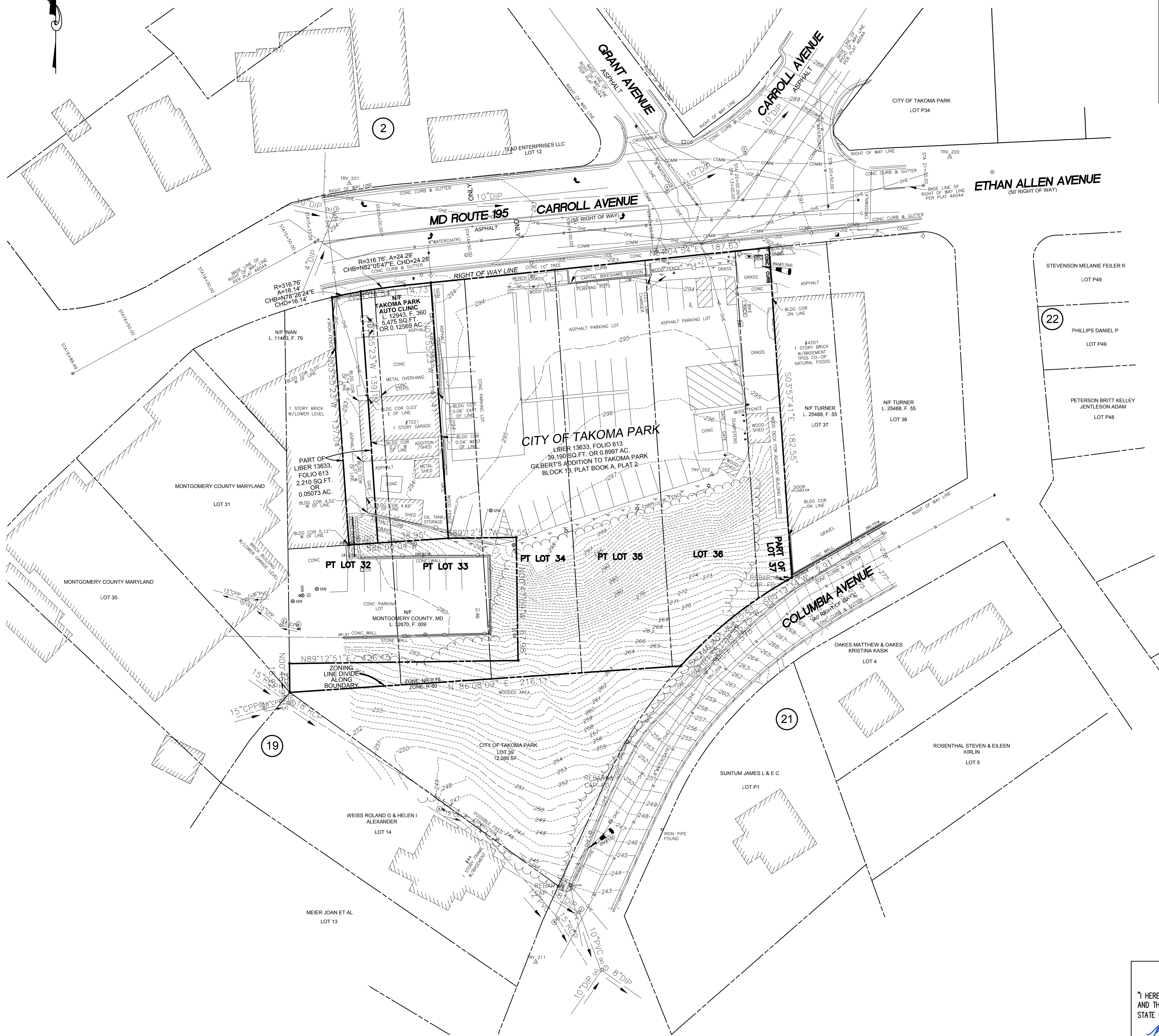
- F.F FINISHED FLOOR ELEVATION
- DATR DATA ACCORDING TO RECORDS
- DIP DUCTILE IRON PIPE
- RCP REINFORCED CONCRETE PIPE
- CPP CORRUGATED PLASTIC PIPE
- GROUND SHOT
- TREE
- ROOF DRAIN
- SIGN
- ELECTRIC MANHOLE
- LIGHT POLE
- POWER POLE
- ELECTRIC JUNCTION BOX
- SANITARY SEWER MANHOLE
- CLEAN OUT
- WATER VALVE
- WATER METER
- WATER MANHOLE
- TRAVERSE
- BENCHMARK
- GAS VALVE
- GAS METER
- HANDICAP PARKING SPACE
- BOLLARD
- DRAIN
- CURB & GUTTER
- RIGHT OF WAY LINE
- BUILDING
- WATER LINE PAINT MARK
- GAS LINE PAINT MARK
- COMMUNICATION PAINT MARK
- OVERHEAD ELECTRIC
- UNDERGROUND ELECTRIC
- SANITARY SEWER
- FENCE
- TREE LINE

NOTES:

- HORIZONTAL DATUM: MARYLAND STATE PLANE NAD 83, BASED ON RTN GPS OBSERVATIONS.
- VERTICAL DATUM: NGVD, BASED ON WSSC BENCH MARK #5366
- PROPERTY CORNER MARKERS NOT INSTALLED BY THIS SURVEY
- ADDITIONAL SPOT ELEVATIONS CAN BE FOUND ON HIDDEN OR FROZEN LAYERS OF THE CAD FILE.
- THE LOCATION OF ALL UTILITIES SHOWN HEREON IS A COMBINATION OF FIELD INVESTIGATION, VISIBLE FIELD EVIDENCE, AVAILABLE RECORDS AND CANNOT BE GUARANTEED.
- UTILITY RECORDS HAVE NOT BEEN RECEIVED FOR, PEPCO ELECTRIC, VERIZON COMMUNICATION OR MCI FIBER OPTIC AT THE TIME OF ISSUANCE OF THE SURVEY DRAWING.

"MISS UTILITY" NOTE

CALL "MISS UTILITY" AT 1-800-257-7777, 48 HOURS PRIOR TO THE START OF WORK. THE EXCAVATOR MUST NOTIFY ALL PUBLIC UTILITY COMPANIES WITH UNDERGROUND FACILITIES IN THE AREA OF PROPOSED EXCAVATION AND HAVE THOSE FACILITIES LOCATED BY THE UTILITY COMPANIES PRIOR TO COMMENCING EXCAVATION. THE EXCAVATOR IS RESPONSIBLE FOR COMPLIANCE WITH REQUIREMENTS OF CHAPTER 36A OF THE MONTGOMERY COUNTY CODE.



AMT LLC
PROFESSIONAL ENGINEERS
LAND SURVEYORS
LANDSCAPE ARCHITECTS
10 G STREET, NE, SUITE 430
WASHINGTON, DC, 20002
PH: (202) 289-4545
FAX: (202) 289-5051

PRELIMINARY PLAN #120190150
TAKOMA JUNCTION
13TH ELECTION DISTRICT
CITY OF TAKOMA PARK
MONTGOMERY COUNTY, MARYLAND
TAX MAP: JN51
WSSC GRID: 208NE01 & 209NE01

DATE	REVISION



PROFESSIONAL CERTIFICATION: I HEREBY CERTIFY THAT THESE DOCUMENTS WERE PREPARED OR APPROVED BY ME, AND THAT I AM A DULY LICENSED PROFESSIONAL ENGINEER UNDER THE LAWS OF THE STATE OF MARYLAND. LICENSE NO. 38317 EXPIRATION DATE: 11/30/19

EXISTING CONDITIONS PLAN

DESIGNED	AMC
CHECKED	BCJ
SCALE	AS SHOWN
FILE NO.	114-123
DATE	JANUARY 2019

PROFESSIONAL CERTIFICATION
"I HEREBY CERTIFY THAT THESE DOCUMENTS WERE PREPARED OR APPROVED BY ME, AND THAT I AM A DULY LICENSED PROFESSIONAL ENGINEER UNDER THE LAWS OF THE STATE OF MARYLAND."

 DESIGN ENGINEER SIGNATURE
 BRADLEY CHARLES JOB
 PRINTED NAME
 JANUARY 30, 2019
 DATE
 38317
 REGISTRATION NUMBER

C1.03