



ENGINEERS PLANNERS
 LANDSCAPE ARCHITECTS SURVEYORS
VIKA MARYLAND, LLC
 20251 CENTURY BOULEVARD SUITE 400
 GERMANTOWN, MARYLAND 20874
 PHONE: 301.916.4100
 FAX: 301.916.2262
 GERMANTOWN, MD. TIPSOS, VA.

PREPARED FOR:
USL2 MR
MONTGOMERY VILLAGE
BUSINESS TRUST
 c/o **MONUMENT REALTY**
 1700 K Street, NW, Suite 600,
 Washington, DC 20006
 202.777.2010
 RUSSELL HINES

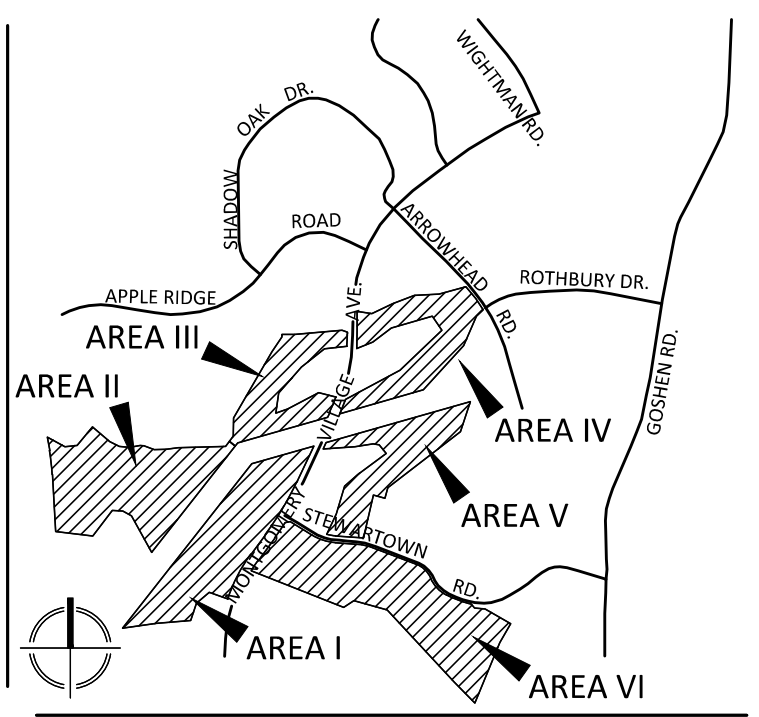
DESIGN CONSULTANTS

ARCHITECTS
TORTI GALLAS AND PARTNERS, INC.
 1202 Spring Street, Suite 400
 Silver Spring, Maryland 20910
 301.588.4800
 ERIK J. AULESTIA

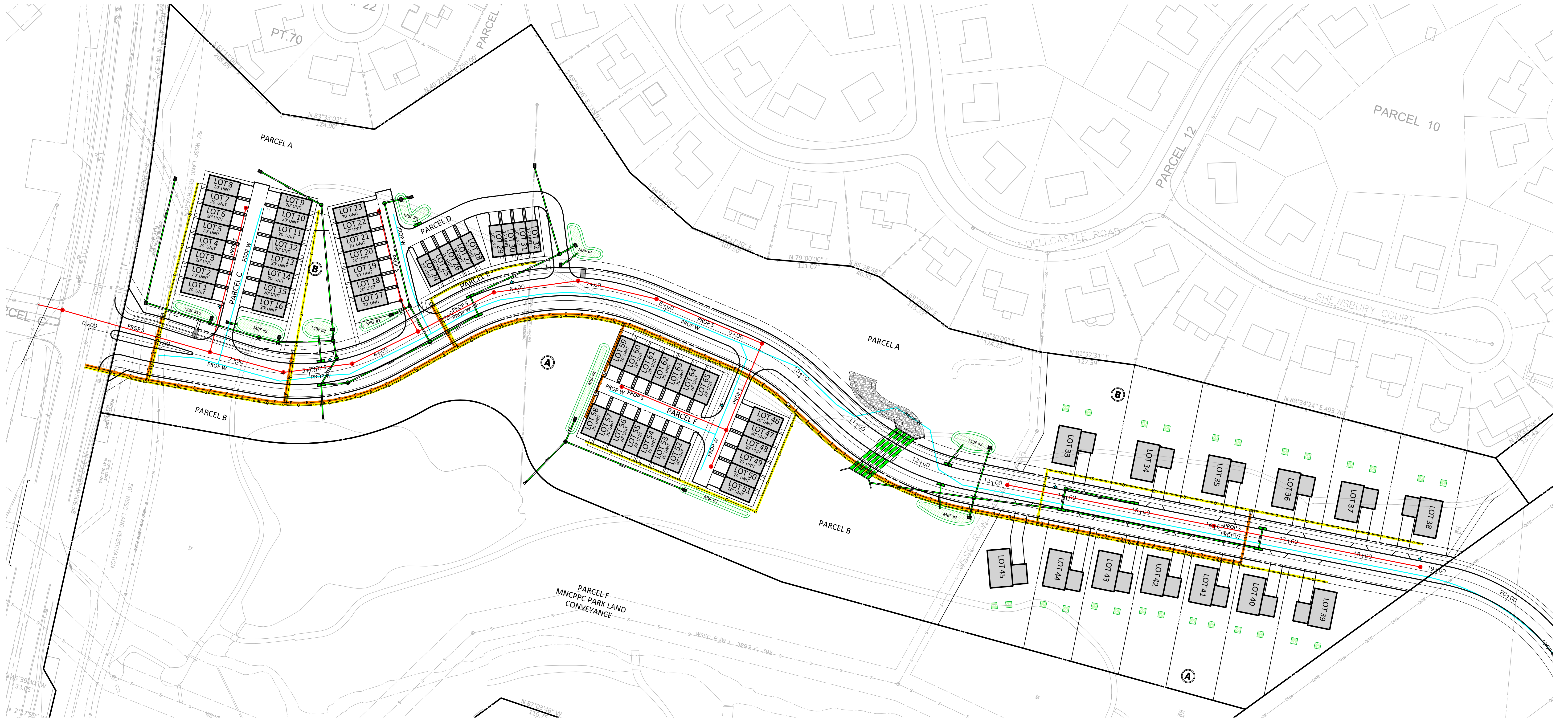
ATTORNEYS
LEICHER, EARLY, & BREWER
 3 Bethesda Metro Center
 Suite 460
 Bethesda, MD 20814
 301.841.3832
 PATRICIA HARRIS

TRAFFIC ENGINEER
WELLS + ASSOCIATES
 8730 Georgia Avenue, Suite 200
 Silver Spring, MD 20910
 301.448.1333
 KEVIN BERGER

CIVIL ENGINEER &
 LANDSCAPE ARCHITECT
VIKA MARYLAND, LLC
 20251 CENTURY BOULEVARD
 SUITE 400
 GERMANTOWN MD, 20874
 301.916.4100
 JEFFREY AMATEAU

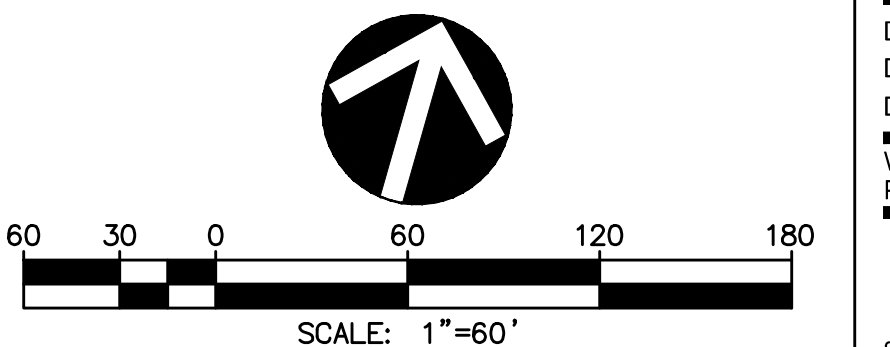


VICINITY MAP
 SCALE: 1" = 2000'



LEGEND

- PROP. STORM DRAIN
- PROP. SEWER MAIN
- PROP. WATER MAIN
- PROP. RIGHT OF WAY
- EX. STORM DRAIN
- EX. SEWER MAIN
- EX. WATER MAIN
- EX. TELEPHONE
- EX. ELECTRIC
- EX. GAS LINE
- PROPOSED ELECTRIC
- PROPOSED GAS
- PROP. SWM FACILITY



REVISIONS	DATE

PROFESSIONAL SEAL

**BLOOMING MV
 AREAS I-VI**

9TH ELECTION DISTRICT
 MONTGOMERY COUNTY,
 MARYLAND
 WSSC GRID: 227NW09.10 &
 226NW09
 TAX MAP: FU341, 342, 343

**COLOR UTILITY
 EXHIBIT
 AREA II**

DRAWN BY: TG
 DESIGNED BY: WDR
 DATE ISSUED: DEC 5, 2016
 VIKI PROJECT VM1920

SHEET NO. 3