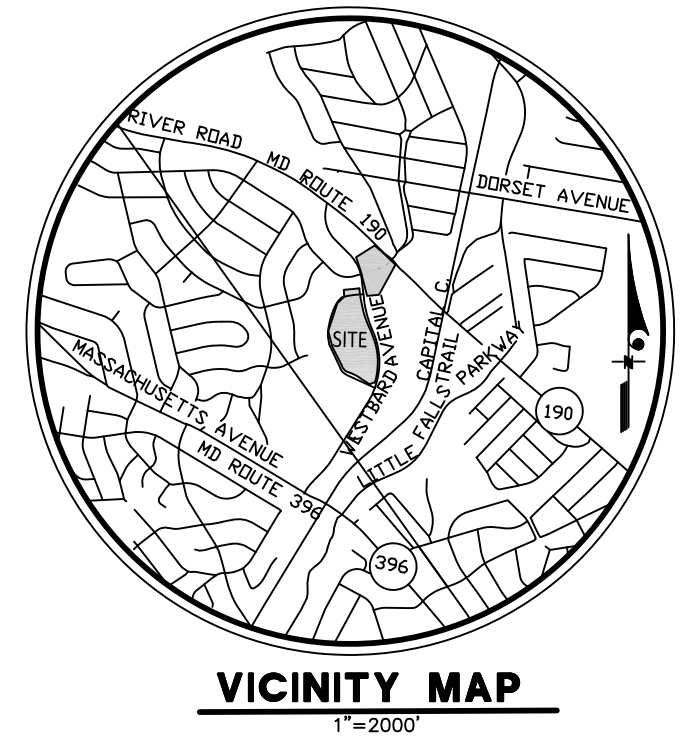
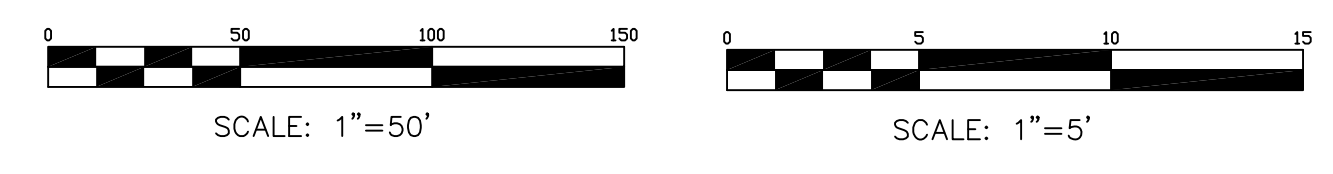


WESTBARD IMPROVEMENT
GRADE ESTABLISHMENT PLAN
SCALE: 1"=50' HORIZONTAL
1"=5' VERTICAL



WESTWOOD SHOPPING CENTER

7TH ELECTION DISTRICT
BETHESDA, MARYLAND
Applicant / Owner:
Equity One (Northeast Portfolio) LLC
c/o Regency Centers, L.P.



1919 Gallows Road, Suite 1000
Vienna, VA 22182
703-442-4302
Sam Steibel



Residential Developer:
The Neighborhoods of EYA
4800 Hampden Lane, Suite 300
Bethesda, MD 20814
301-634-8600
Jack Lester

LINOWES AND BLOCHER LLP

ATTORNEYS AT LAW
Attorney:
Linows and Blocher LLP
7200 Wisconsin Avenue, Suite 800
Bethesda, MD 20814
301-654-0504
Erin Girard



Johnson • Bernat • Associates, Inc.
Civil Engineer:
Johnson Bernat Associates, Inc.
205 N. Frederick Avenue, Suite 100
Gaithersburg, MD 20877
301-963-1133
Kevin Johnson



Architect:
Mushinsky Voelzke Associates | MV+A
1200 G Street, NW Suite 250
Washington, DC 20005
202-682-2822
Jim Voelzke



Landscape Architect:
LandDesign
200 South Peyton Street
Alexandria, VA 22314
703.594.7784
Gabriela Canamar



Traffic Consultant:
Wells + Associates
8730 Georgia Avenue, Suite 200
Silver Spring, MD 20910
301-971-3415
Nancy Randall

PRELIMINARY PLAN NO. 120170170

WESTBARD GRADE ESTABLISHMENT PLAN

MAY 14, 2018

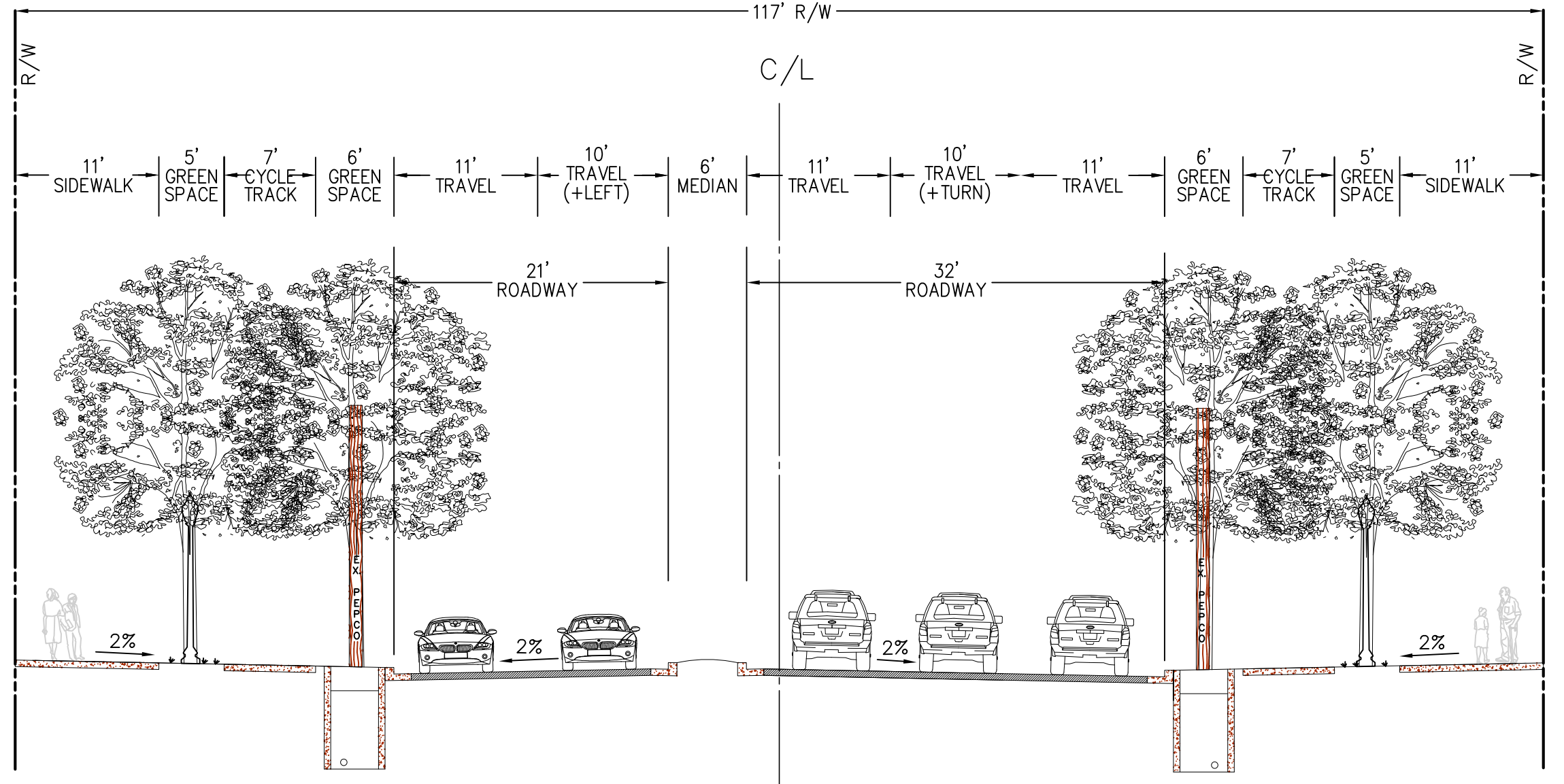
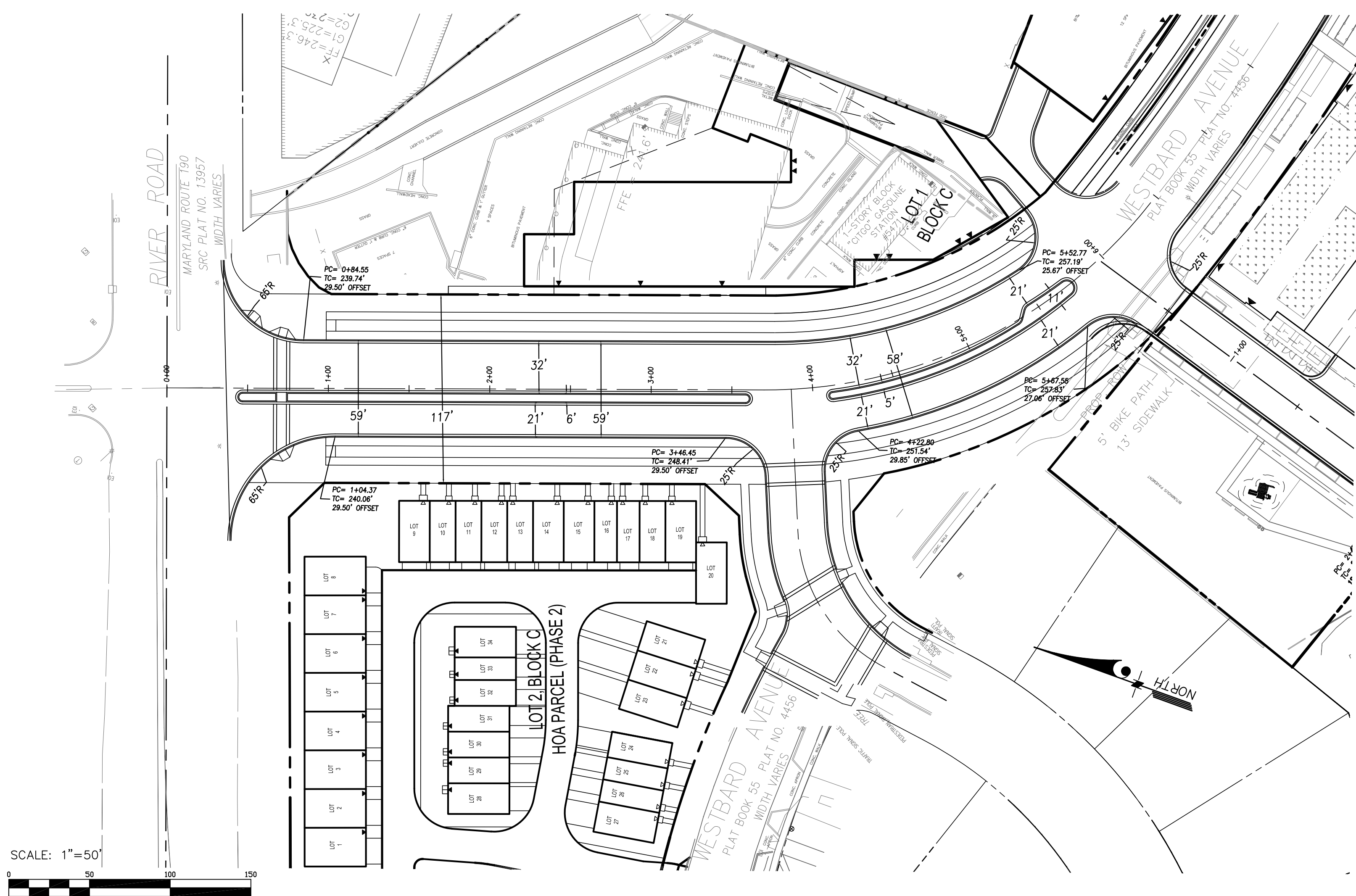
DRAWN BY: AMB
CHECKED BY: KJJ

REV.	ISSUE	DATE

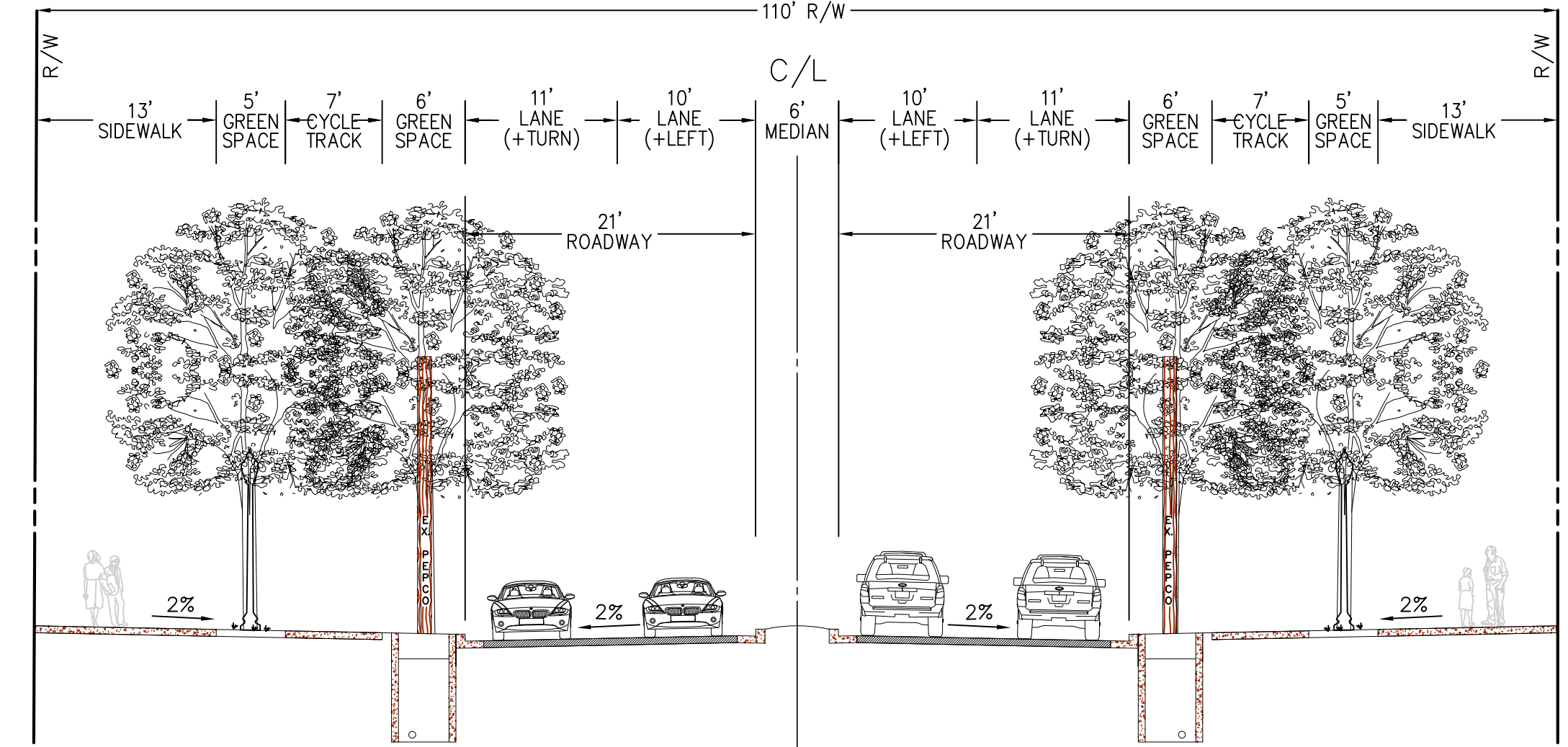
DRAWING STAMP

SHEET NUMBER

PPGE-1



WESTBARD AVENUE
PUBLIC ROADWAY
FACING RIVER ROAD
SCALE: 1"=10'
STA 1+00 TO STA 6+00



WESTBARD AVENUE
PUBLIC ROADWAY
TYPICAL SECTION
SCALE 1"=10'
STA 6+50 TO STA 12+00