

**WESTWOOD SHOPPING CENTER**

7TH ELECTION DISTRICT  
BETHESDA, MARYLAND

Applicant / Owner:  
Equity One (Northeast Portfolio) LLC  
c/o Regency Centers, L.P.



1919 Gallows Road, Suite 1000  
Vienna, VA 22182  
703-442-4302  
Sam Steibel



Residential Developer:  
The Neighborhoods of EYA  
4800 Hampden Lane, Suite 300  
Bethesda, MD 20814  
301-634-8600  
Jack Lester

**LINOWES AND BLOCHER LLP**  
ATTORNEYS AT LAW

Attorney:  
Linowes and Blocher LLP  
7200 Wisconsin Avenue, Suite 800  
Bethesda, MD 20814  
301-654-0504  
Erin Girard



Civil Engineer:  
Johnson Bernat Associates, Inc.  
205 N. Frederick Avenue, Suite 100  
Gaithersburg, MD 20877  
301-963-1133  
Kevin Johnson



Architect:  
Mushinsky Voelzke Associates | MV+A  
1200 G Street, NW, Suite 250  
Washington, DC 20005  
202-682-2822  
Jim Voelzke



Landscape Architect:  
LandDesign  
200 South Peyton Street  
Alexandria, VA 22314  
703.594.7784  
Gabriela Canamar



Traffic Consultant:  
Wells + Associates  
8730 Georgia Avenue, Suite 200  
Silver Spring, MD 20910  
301-971-3415  
Nancy Randall

PRELIMINARY PLAN NO.  
120170170

**DEDICATION PLAN**

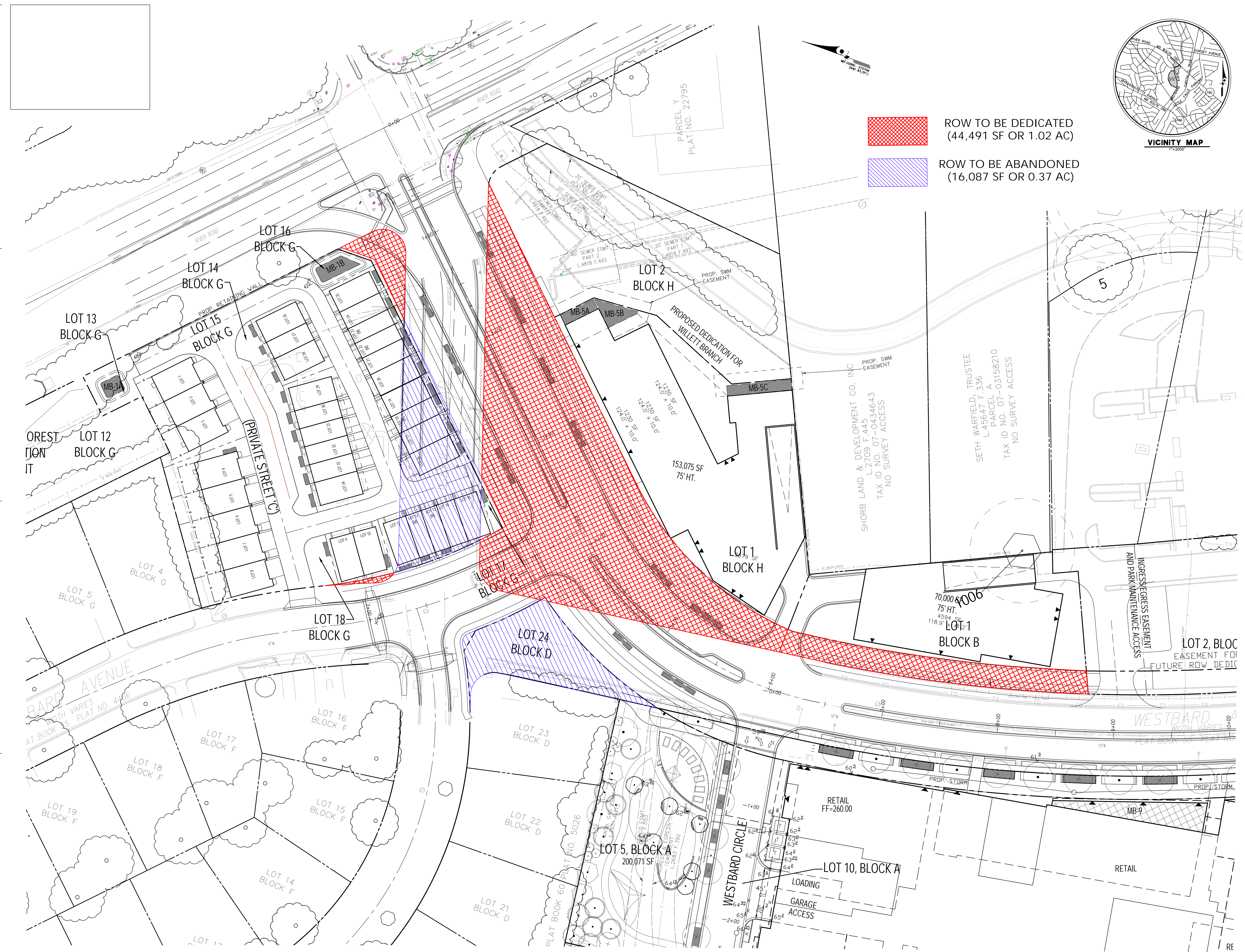
JANUARY 14, 2019

DRAWN BY: AMB  
CHECKED BY: KJJ

REV.	ISSUE	DATE

DRAWING STAMP

SHEET NUMBER  
**DED-1**



**ROW TO BE DEDICATED**  
(44,491 SF OR 1.02 AC)

**ROW TO BE ABANDONED**  
(16,087 SF OR 0.37 AC)

SCALE: 1" = 30'